



**WORLD'S BEST
ALLOY BULLBARS**

East Coast Bullbars (ECB Pty Ltd)

Tel: 07 3897 5700

Fax: 07 3283 1168

ecb@ecb.com.au www.ecb.com.au

29 Snook St
Clontarf QLD 4019
Australia

Po Box 122
Margate QLD 4019
Australia

**EAT201SY
FITTING INSTRUCTIONS
TOYOTA TUNDRA 11/13on
ARC BAR PROTECTION BAR WITH FOG LIGHTS AND SENSORS
TO SUIT WARN 15000 LB
VEHICLE FRONTAL PROTECTION SYSTEM (VFPS)
FOR AIR BAG & ADR COMPLIANT VEHICLES**

REPLACES: 00.00.00
REVISED: 16.01.18

Check installation hardware before commencing.

1. Lift bonnet
2. Remove grille by removing two push / pull clips and four 10 mm head screws from top of grille. Pull out on bottom of grille to unclip and lift up to remove. **See figure 1.**
3. Remove lower grille stiffener by removing six 10 mm head nuts. **See figure 2.**
4. Remove filler panel under headlight by removing two push/pull clips from front and pulling out sideways. **See figure 3.**
5. Remove filler locator by removing two 10 mm head bolts from front and one red clip from rear. One 10 mm head screw from guard liner and remove. **See figure 4.**
6. Remove two 10 mm head bolts from inner guard, one push/pull clip from liner to chassis rail per side, two 10mm head bolts and two 12 mm head bolts from underside of bumper end to remove liners. Remove three push/pull clips from top of bumper and ten 10mm head bolts. Remove three 10 mm head bolts from under side of bumper centre. Unplug bumper sensors and fog lights and remove bumper.
7. Unplug wiring harness from outer side of bumper reinforcement. **See figure 5.**
8. Remove six 17 mm head bolts from end of crash can to reinforcement and remove reinforcement. **See figure 6.**
9. Remove four 14 mm head bolts from crash can per side and remove crash can. **See figure 7.**
10. Using template supplied mark out cut line on side filler panels. Clip filler locator onto filler panel and cut on marked line. **See figure 8.**
11. Splice ECB wiring harness into wiring harness behind headlight using cable locks (supplied). Ensure harness is clear of sharp edges and moving parts.
12. Connect ECB Quick Click fog light wiring harness (supplied) into original fog light wiring harness.
13. Fit filler locator back onto vehicle using original 10mm bolt and red clip .Fit 10mm head screw into liner and fit filler panel into place, secure with two original black clips and trim cut line with 3mm clip lock supplied.
14. Fit grille in reverse step of 2.
15. Fit Fairlead onto front of winch cradle using bolts supplied two M12 x 1.25 x 35 bolts, spring washers, flat washers and nuts (supplied). Fit winch into cradle using bolts supplied in Warn bolt kit, fit ECB steel control box mount onto front side of cradle using bolts supplied. Two M10 x 30 bolts, spring washers, flat washers



**WORLD'S BEST
ALLOY BULLBARS**

East Coast Bullbars (ECB Pty Ltd)

Tel: 07 3897 5700

Fax: 07 3283 1168

ecb@ecb.com.au www.ecb.com.au

29 Snook St
Clontarf QLD 4019
Australia

Po Box 122
Margate QLD 4019
Australia

and nuts (supplied), fit control box onto mount using nuts and flat washers supplied by Warn in bolt kit. **See figure 9.**

16. Fit cradle onto end of chassis rail using bolts supplied. Four M10 x 1.25 nuts, spring washers and flat washers per side (supplied). Fit tow hooks using original bolts. Centralise cradle to front of vehicle and tighten all bolts.
17. Attach 6mm clip lock trim (supplied) to top of ECB protection bar. **See figures 10 and 11.**
18. Attach ECB fog lights to protection bar. Place M6 x 20 bolts, spring washers (supplied) through light mount from inside and attach nut to top. Slide assembly into light mount in Protection bar and centralize light to hole. **TIGHTEN FIRM ONLY. See figure 12.**
19. Fit ECB LED indicator / park lights into protection bar as per instructions supplied with the LED indicator kit. **NOTE: Ensure park light is to outside. See figure 13.**
20. Fit ECB protection bar onto mount and fix with bolts supplied six M12 x 40 bolts, flat washers, spring washers and nuts (supplied). Align protection bar with front of vehicle and tighten all bolts. **See figure 14 and 15.**
21. Connect indicator and fog light wiring and test for correct operation. Fit fog light surrounds to protection bar.
22. Fit ECB under body guard using bolts (supplied) two M6 X 25 bolts, spring washers and flat washers. Use original ten mm head screws at rear of under body guard into vehicle.

ENSURE NUMBER PLATE IS CLEARLY VISABLE

Note: When fitting/refitting the licence plate to the vehicle, ensure there is no obstruction to licence plate vision in accordance with local authorities. If required relocate licence plate to an alternate location.

Further VFPS Notes:

- a) Do not attach VFPS to the vehicle using anchorages not intended for this purpose (e.g. engine mounting bolts).
- b) Do not use this product for any vehicle make or model, other than those specified by the VFPS manufacturer.
- c) Do not remove the plaque or label from the VFPS.
- d) Do not modify the structure of the VFPS in any way.
- e) No accessory or fitment should project forward of the VFPS forward profile.
- f) **ENSURE THESE INSTRUCTIONS ARE LEFT WITH VEHICLE OWNER AND/OR OPERATOR.**

IMPORTANT INFORMATION

Periodically check bolts and nuts for correct tightness, especially if travelling on rough roads

FITTING KIT

| | |
|----------------------------|---|
| 1 – ECB steel winch cradle | 2 – M6 X 25 bolts |
| 1 – under body guard | 2 – M6 x 20 bolts |
| 1 – control box mount | 2 – M6 flat washers |
| 2 – M12 x 1.25 x 30 bolts | 4 – M6 spring washers |
| 6 – M12 x 1.25 x 40 bolts | 2 – M6 nuts |
| 16 – M12 flat washer | 1 – ECB LED Indicator / Park light kit |
| 8 – M12 spring washers | 1 – Pair 35w fog lights |
| 8 – M12 x 1.25 nuts | 1 – Quick clip harness (IC10D40S1004ECBH) |
| 2 – M10 x 1.25 x 30 bolts | 4 – Fog light surrounds |
| 12 – M10 flat washers | 2 – Length 3mm clip lock 450 mm long |
| 10 – M10 spring washers | 1 – Length 6mm clip lock 1800 mm long |
| 10 – M10 x 1.25 nuts | 6 – Cable locks |



**WORLD'S BEST
ALLOY BULLBARS**

East Coast Bullbars (ECB Pty Ltd)

Tel: 07 3897 5700

Fax: 07 3283 1168

ecb@ecb.com.au www.ecb.com.au

29 Snook St
Clontarf QLD 4019
Australia

Po Box 122
Margate QLD 4019
Australia



Figure 1 - Remove 4 grille screws and 2 clips.

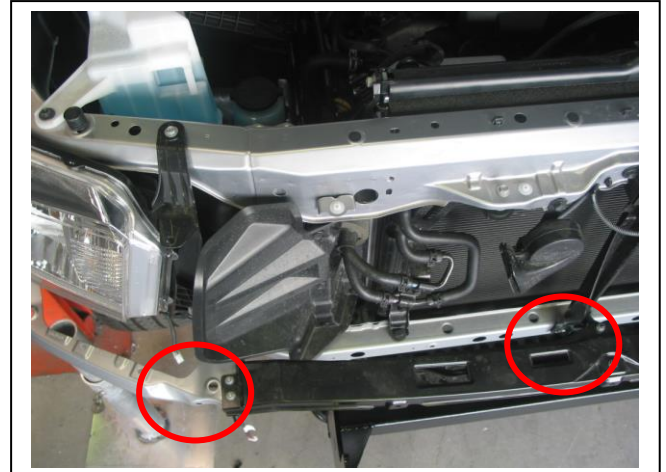


Figure 2 – Remove six nuts.

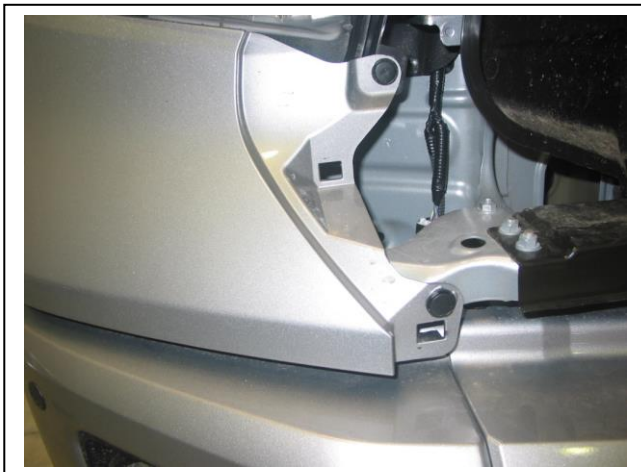


Figure 3 - Remove two clips.



Figure 4 - Remove filler locator.



Figure 5 - Remove wiring harness.



Figure 6 - Remove reinforcement



East Coast Bullbars (ECB Pty Ltd)

Tel: 07 3897 5700

Fax: 07 3283 1168

ecb@ecb.com.au www.ecb.com.au

29 Snook St
Clontarf QLD 4019
Australia

Po Box 122
Margate QLD 4019
Australia

WORLD'S BEST
ALLOY BULLBARS



Figure 7 - Remove crash can

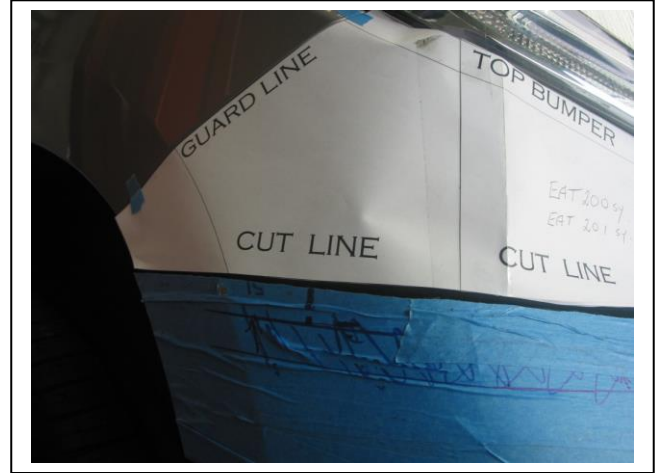


Figure 8 - Placement of filler panel template



Figure 9 - Steel mount fitted.

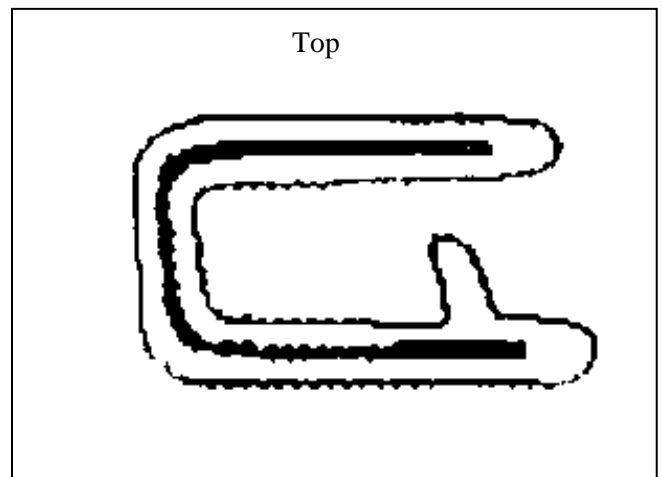


Figure 10

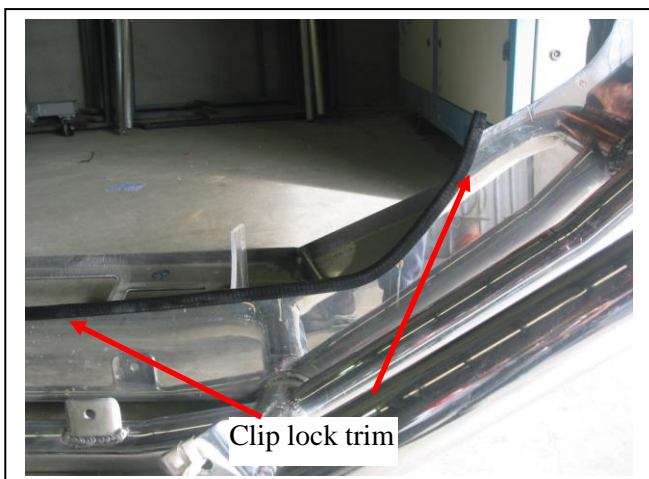
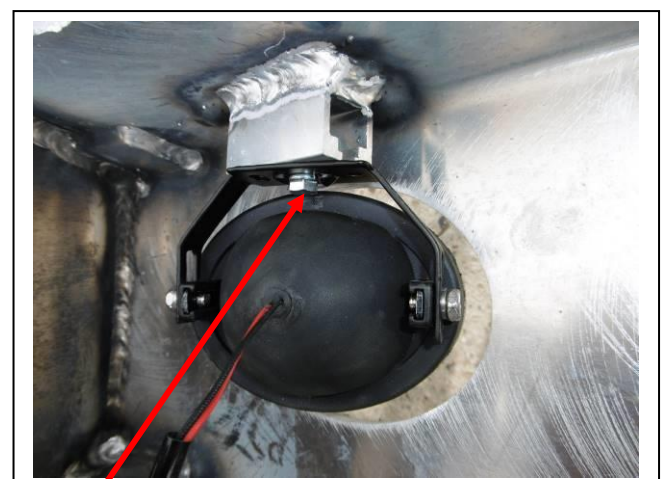


Figure 11



M6 bolt

Figure 12



**WORLD'S BEST
ALLOY BULLBARS**

East Coast Bullbars (ECB Pty Ltd)

Tel: 07 3897 5700

Fax: 07 3283 1168

ecb@ecb.com.au www.ecb.com.au

29 Snook St
Clontarf QLD 4019
Australia

Po Box 122
Margate QLD 4019
Australia



Figure 13



Figure 14. Front view



Figure 15. Side view



**WORLD'S BEST
ALLOY BULLBARS**

East Coast Bullbars (ECB Pty Ltd)

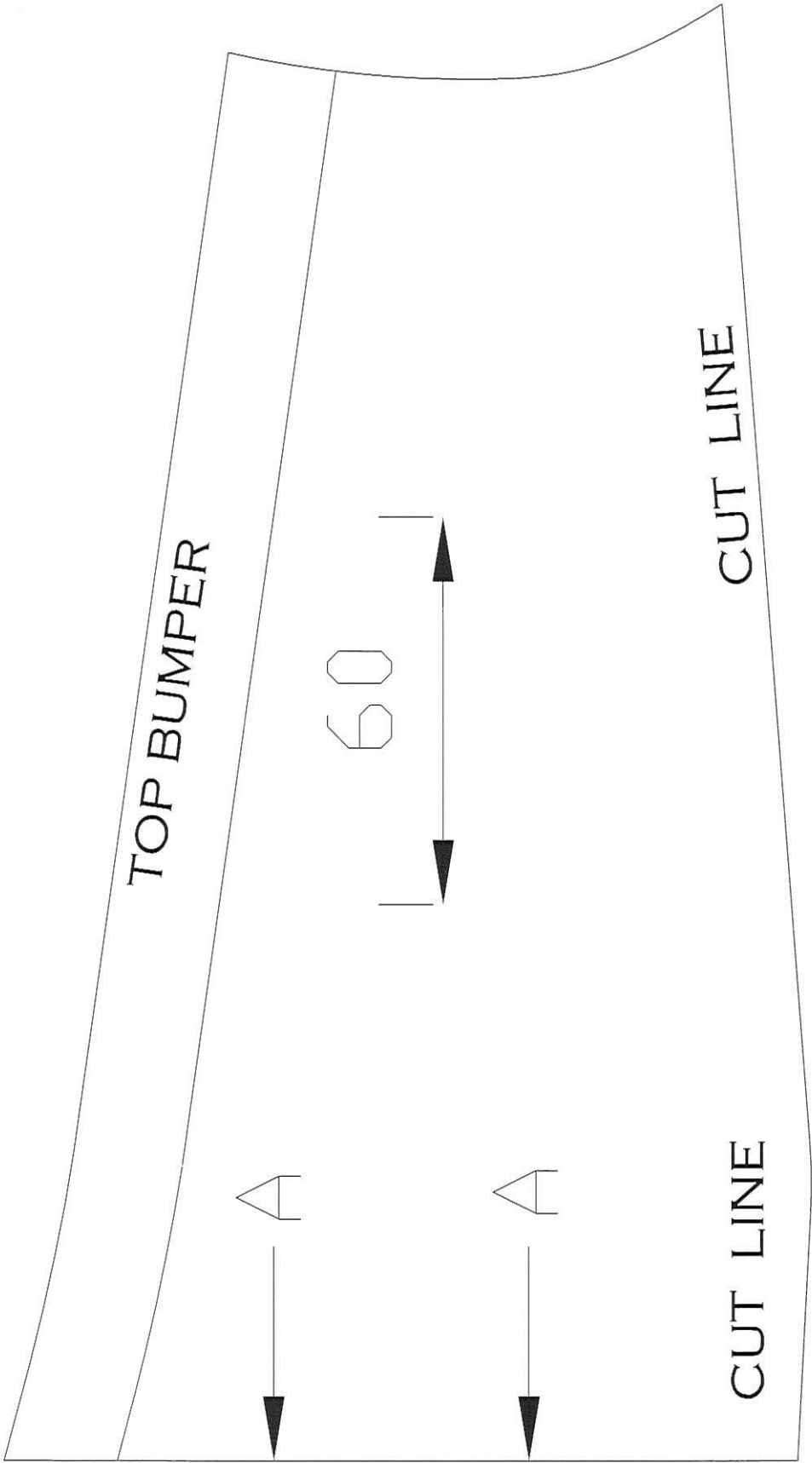
Tel: 07 3897 5700

Fax: 07 3283 1168

ecb@ecb.com.au www.ecb.com.au

29 Snook St
Clontarf QLD 4019
Australia

Po Box 122
Margate QLD 4019
Australia





**WORLD'S BEST
ALLOY BULLBARS**

East Coast Bullbars (ECB Pty Ltd)

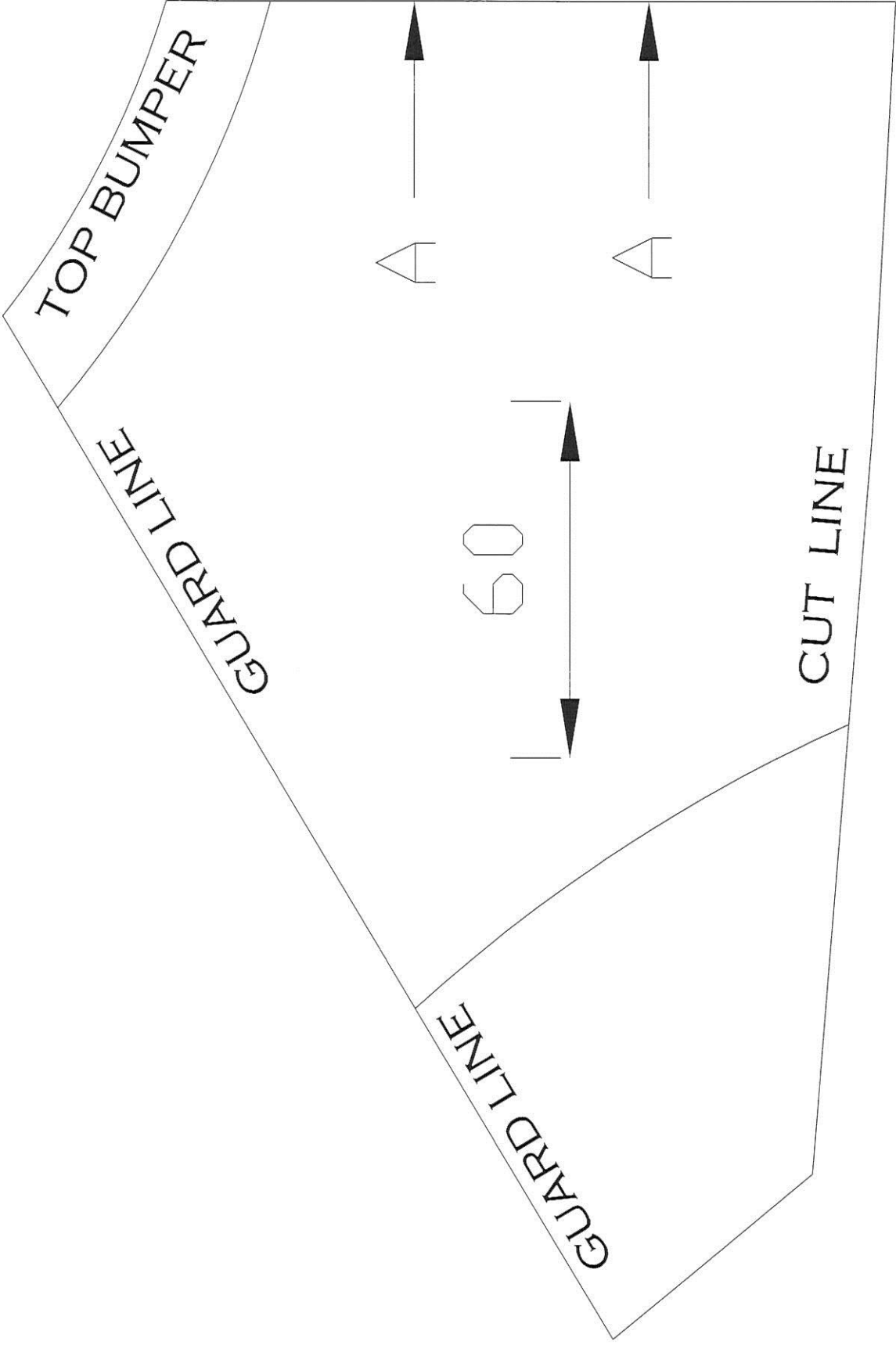
Tel: 07 3897 5700

Fax: 07 3283 1168

ecb@ecb.com.au www.ecb.com.au

29 Snook St
Clontarf QLD 4019
Australia

Po Box 122
Margate QLD 4019
Australia





**WORLD'S BEST
ALLOY BULLBARS**

East Coast Bullbars (ECB Pty Ltd)

Tel: 07 3897 5700

Fax: 07 3283 1168

ecb@ecb.com.au www.ecb.com.au

29 Snook St
Clontarf QLD 4019
Australia

Po Box 122
Margate QLD 4019
Australia



**WORLD'S BEST
ALLOY BULLBARS**

East Coast Bullbars (ECB Pty Ltd)

Tel: 07 3897 5700

Fax: 07 3283 1168

ecb@ecb.com.au www.ecb.com.au

29 Snook St
Clontarf QLD 4019
Australia

Po Box 122
Margate QLD 4019
Australia

We value your comments

Dear Fitter,

ECB would like to know how you went with the installation of this product. We value your comment and may need to contact you to clarify some details so please complete your contact details clearly.

We would appreciate if you could complete as many of the following details as possible.

| | |
|-------------------------------|--|
| Your Name: | Your contact No. |
| Product Part No. | Product Invoice No. |
| Product Description: | Make, model, and year of vehicle: |
| Product Work Order No. | Company your from/Company product purchased from: |

Date of Fitment: ____/____/____

Was the fitting hardware supplied complete?

Yes

No

If no what was not supplied

Did the installation go well?

Yes

No

Please provide comments

Please draw diagrams if you need to.

Post to

Reply Paid 122

PO Box 122

Margate QLD 4019

Fax to

(07) 3283 1168



WORLD'S BEST
ALLOY BULLBARS

East Coast Bullbars (ECB Pty Ltd)

Tel: 07 3897 5700

Fax: 07 3283 1168

ecb@ecb.com.au www.ecb.com.au

29 Snook St
Clontarf QLD 4019
Australia

Po Box 122
Margate QLD 4019
Australia

DESPATCH CHECKLIST EAT201SY

| | | |
|--------------|--|---|
| Work Order # | | See other side of this page for photos of all mounts |
| Finish: | | |
| Transport: | | |
| Due Date: | | |

- OC.....1 – Steel winch mount.
- OC.....1 – Control box mount
- OC.....1 – Under body guard
- OC.....2 – ECB Overrides – **Fitted to Bar**
- OC.....8 – 6mm Air Vents – **Fitted to Bar**
- BK.....1 – Bolt Kit.
- BK.....1 – LED ECB indicator / park light kit.
- BK.....1 – 1800mm length 6mm clip lock
- BK.....2 – 500mm length 3mm clip lock
- BK.....1 – Pair fog lights (35watt)
- BK.....4 – Fog light surrounds

_____/_____
Wrapper's initials / Checker initials



Is this product "the best it can be" Yes
If NO fix before continuing

All parts checked and completed by:

Nut and bolts: _____ Date __/__/__

Order control: _____ Date __/__/__

Final wrap check: _____ Date __/__/__



**WORLD'S BEST
ALLOY BULLBARS**

East Coast Bullbars (ECB Pty Ltd)

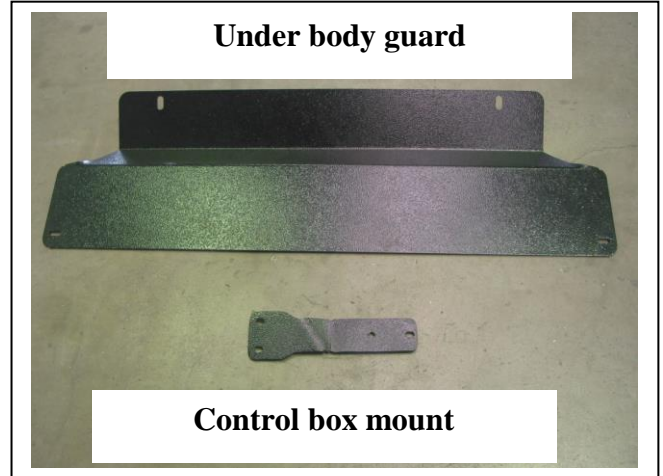
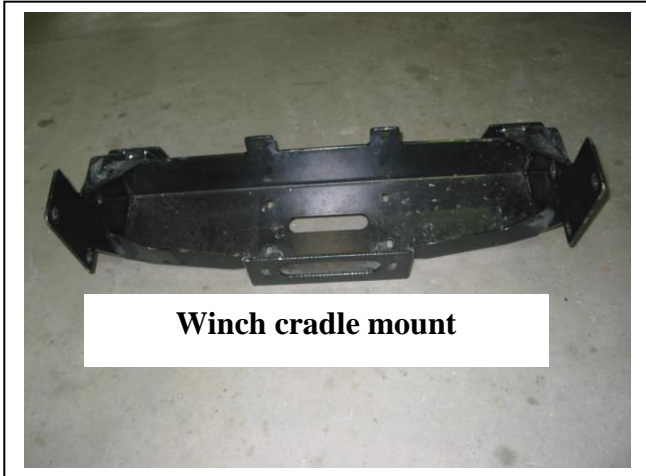
Tel: 07 3897 5700

Fax: 07 3283 1168

ecb@ecb.com.au www.ecb.com.au

29 Snook St
Clontarf QLD 4019
Australia

Po Box 122
Margate QLD 4019
Australia



_____/_____
Wrapper's initials / Checker initials